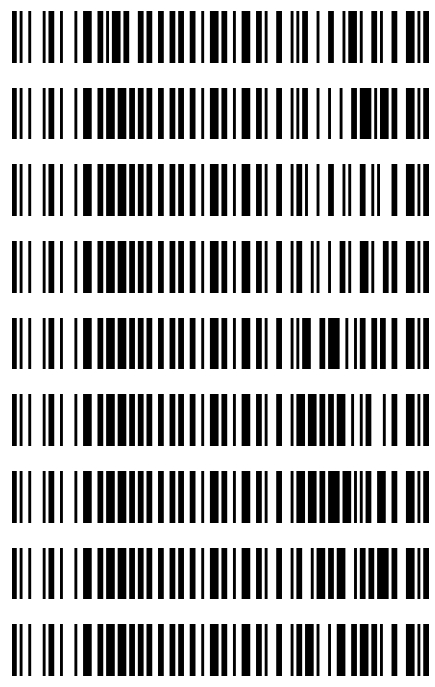


Worklist: 2186

Bylee

<u>LAB_CASE</u>	<u>ITEM</u>	<u>TASK_ID</u>	<u>DESCRIPTION</u>
M2018-0453	3	107476	AM 3 Urine Carboxy-THC
P2018-0359	1	107477	AM 3 Urine Carboxy-THC
P2018-0377	1	107478	AM 3 Urine Carboxy-THC
P2018-0380	1	107479	AM 3 Urine Carboxy-THC
P2018-0427	1	107480	AM 3 Urine Carboxy-THC
P2018-0454	1	107481	AM 3 Urine Carboxy-THC
P2018-0459	1	107482	AM 3 Urine Carboxy-THC
P2018-0463	1	107483	AM 3 Urine Carboxy-THC
P2018-0477	1	107484	AM 3 Urine Carboxy-THC



Data Path : C:\My Files\cshrum\Desktop\Consolidated\Data\URINE\am 3 worklist 2186\
 Data File : THC-PC1.D
 Acq On : 16 Feb 2018 14:12
 Operator : ISP\datastor
 Sample : Spiked Positive c-THC Control
 Misc : c-THC lot # 0497429 in Negative Lot # POC112116; Worklist 2186
 ALS Vial : 2 Sample Multiplier: 1

Integration Parameters: events.e
 Integrator: ChemStation

Method : C:\gcms\1\methods\TOX.M
 Title :

Signal : EIC Ion 371.00 (370.70 to 371.70): THC-PC1.D\data.ms

peak #	R.T. min	first scan	max scan	last scan	PK TY	peak height	corr. area	corr. % max.	% of total
1	4.722	36	48	59	BV	345	4117	11.09%	5.568%
2	5.372	263	274	306	VV	2487	37109	100.00%	50.190%
3	5.787	407	418	429	BV	124	2453	6.61%	3.318%
4	5.982	478	486	499	VV	168	2976	8.02%	4.025%
5	6.282	570	590	602	VV	297	7445	20.06%	10.069%
6	6.347	602	612	630	VV	190	6289	16.95%	8.506%
7	6.420	630	638	651	VV	163	3171	8.54%	4.289%
8	6.486	651	661	689	VB 2	166	3859	10.40%	5.219%
9	6.663	699	722	740	BV	218	6518	17.57%	8.816%

Sum of corrected areas: 73938

Signal : EIC Ion 473.00 (472.70 to 473.70): THC-PC1.D\data.ms

peak #	R.T. min	first scan	max scan	last scan	PK TY	peak height	corr. area	corr. % max.	% of total
1	5.373	260	274	295	BV	885	12521	100.00%	76.061%
2	5.927	436	466	488	BB 2	225	3941	31.47%	23.939%

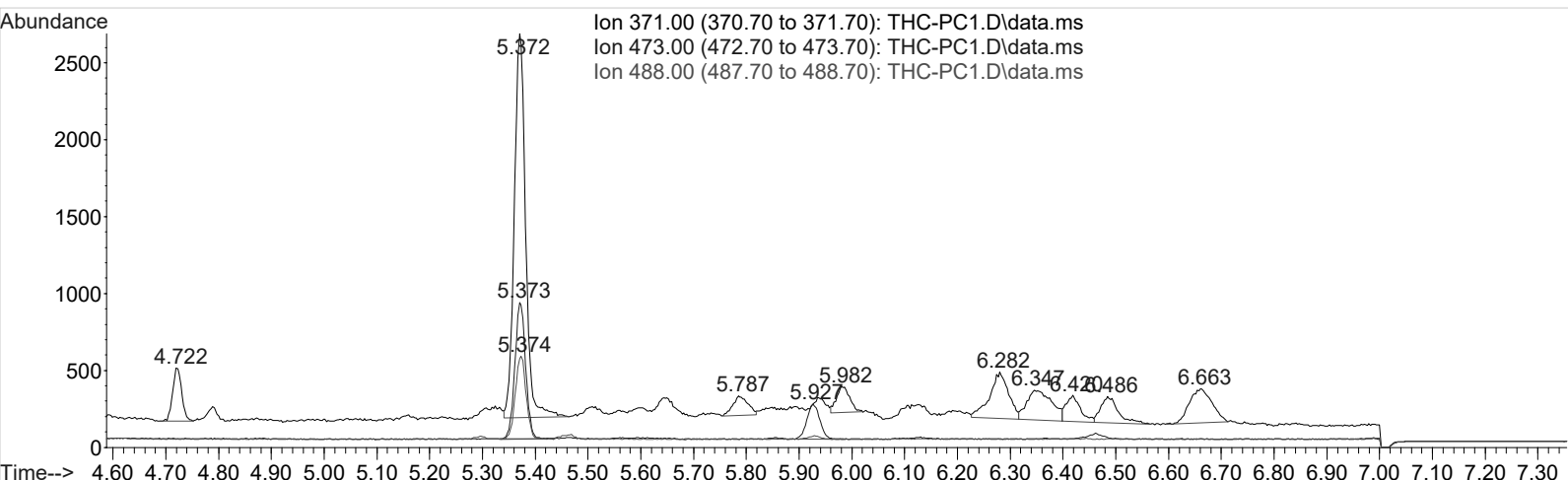
Sum of corrected areas: 16462

Signal : EIC Ion 488.00 (487.70 to 488.70): THC-PC1.D\data.ms

peak #	R.T. min	first scan	max scan	last scan	PK TY	peak height	corr. area	corr. % max.	% of total
1	5.374	261	274	291	BV	538	7670	100.00%	100.000%

Sum of corrected areas: 7670

TOX.M Sat Feb 17 09:57:55 2018



Data Path : C:\My Files\cshrum\Desktop\Consolidated\Data\URINE\am 3 worklist 2186\
Data File : THC-PC2.D
Acq On : 16 Feb 2018 21:17
Operator : ISP\datastor
Sample : Spiked Positive c-THC Control
Misc : c-THC lot # 0497429 in Negative Lot # POC112116; WorklistAM #3; Worklist 2186
ALS Vial : 2 Sample Multiplier: 1

Integration Parameters: events.e
Integrator: ChemStation

Method : C:\gcms\1\methods\TOX.M
Title :

Signal : EIC Ion 371.00 (370.70 to 371.70): THC-PC2.D\data.ms

peak #	R.T. min	first scan	max scan	last scan	PK TY	peak height	corr. area	corr. % max.	% of total
1	4.720	35	47	58	BV	368	4556	12.40%	5.062%
2	5.366	261	272	302	VV	2431	36730	100.00%	40.811%
3	5.643	359	368	388	VV	132	2635	7.17%	2.928%
4	5.789	404	418	428	PV	114	2208	6.01%	2.454%
5	5.975	474	483	515	VV	196	4729	12.88%	5.255%
6	6.125	515	535	544	PV 2	111	3426	9.33%	3.806%
7	6.275	561	587	600	VV	364	10355	28.19%	11.505%
8	6.345	600	611	628	VV	234	8028	21.86%	8.920%
9	6.413	628	635	648	VV	187	3863	10.52%	4.292%
10	6.482	648	659	691	VV	201	4941	13.45%	5.490%
11	6.652	691	718	745	PV	277	8531	23.23%	9.479%

Sum of corrected areas: 90002

Signal : EIC Ion 473.00 (472.70 to 473.70): THC-PC2.D\data.ms

peak #	R.T. min	first scan	max scan	last scan	PK TY	peak height	corr. area	corr. % max.	% of total
1	5.367	259	272	294	BV	843	12286	100.00%	78.292%
2	5.920	434	464	480	BB	199	3406	27.73%	21.708%

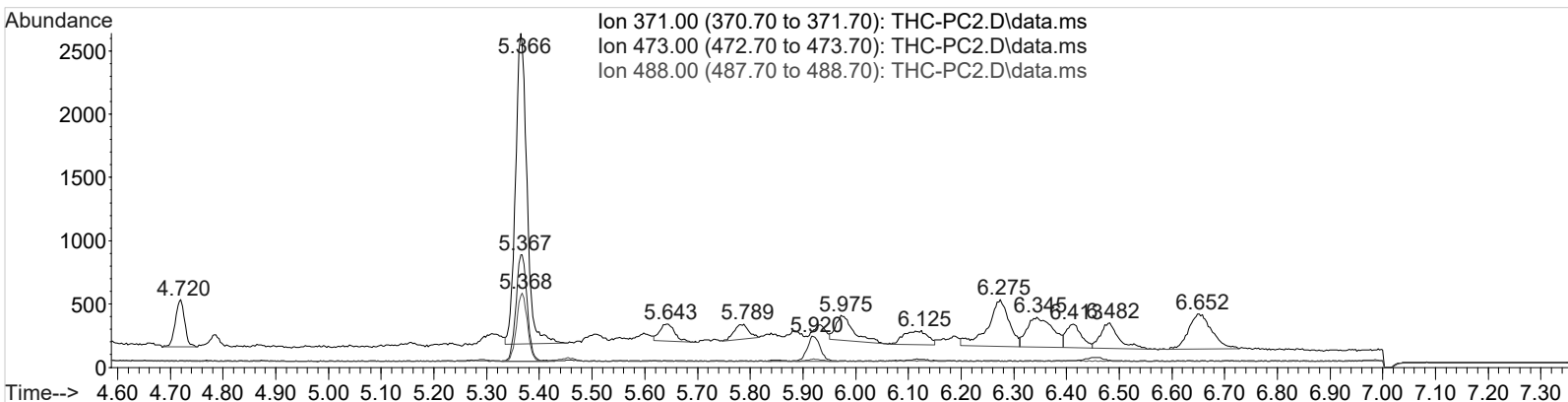
Sum of corrected areas: 15692

Signal : EIC Ion 488.00 (487.70 to 488.70): THC-PC2.D\data.ms

peak #	R.T. min	first scan	max scan	last scan	PK TY	peak height	corr. area	corr. % max.	% of total
1	5.368	259	272	289	BV	531	7649	100.00%	100.000%

Sum of corrected areas: 7649

TOX.M Sat Feb 17 09:58:12 2018



Data Path : C:\My Files\cshrum\Desktop\Consolidated\Data\URINE\am 3 worklist 2186\
Data File : THC-Neg Ctrl.D
Acq On : 16 Feb 2018 14:00
Operator : ISP\datastor
Sample : Negative Control
Misc : Lot # POC112116; AM #3 Worklist 2186
ALS Vial : 1 Sample Multiplier: 1

Integration Parameters: events.e
Integrator: ChemStation

Method : C:\gcms\1\methods\TOX.M
Title :

Signal : EIC Ion 371.00 (370.70 to 371.70): THC-Neg Ctrl.D\data.ms

peak #	R.T. min	first scan	max scan	last scan	PK TY	peak height	corr. area	corr. % max.	% of total
1	4.738	42	54	68	PV	375	4759	63.21%	12.451%
2	5.663	367	375	394	VV	130	2895	38.45%	7.574%
3	5.811	414	426	436	VV	125	2913	38.69%	7.622%
4	6.002	484	493	520	VV	197	4669	62.02%	12.217%
5	6.303	578	597	610	VV	274	7528	100.00%	19.697%
6	6.366	610	619	637	VV	182	5660	75.19%	14.810%
7	6.508	657	668	681	VV 2	137	2655	35.27%	6.947%
8	6.686	696	730	756	BV	219	7140	94.84%	18.680%

Sum of corrected areas: 38220
Signal : EIC Ion 473.00 (472.70 to 473.70): THC-Neg Ctrl.D\data.ms

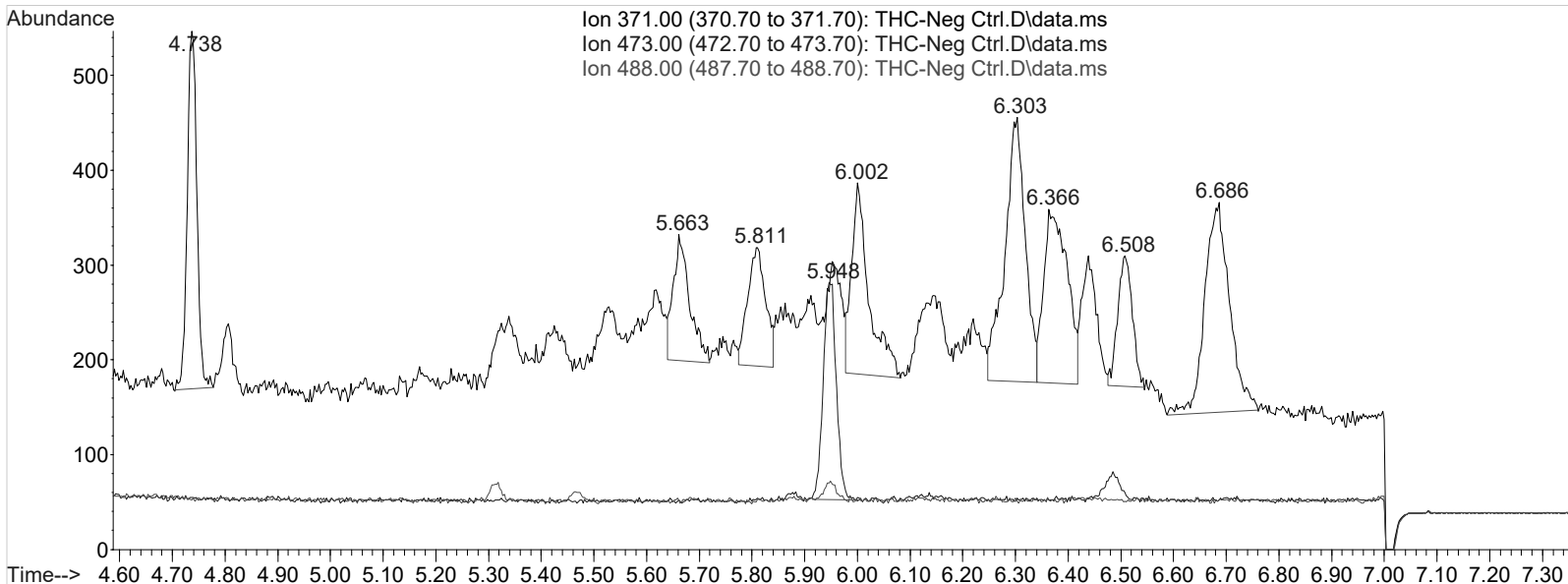
peak #	R.T. min	first scan	max scan	last scan	PK TY	peak height	corr. area	corr. % max.	% of total
1	5.948	462	474	494	BB 2	229	3901	100.00%	100.000%

Sum of corrected areas: 3901
Signal : EIC Ion 488.00 (487.70 to 488.70): THC-Neg Ctrl.D\data.ms

peak #	R.T. min	first scan	max scan	last scan	PK TY	peak height	corr. area	corr. % max.	% of total
No peaks were detected using the method integration parameters!									

No peaks were detected using the method integration parameters!

TOX.M Sat Feb 17 09:59:00 2018



Data Path : C:\My Files\cshrum\Desktop\Consolidated\Data\URINE\am 3 worklist 2186\
Data File : THC-C3.D
Acq On : 16 Feb 2018 14:39
Operator : ISP\datastor
Sample : Biorad C3 Control
Misc : C3 Lot # 68440; Worklist 2186
ALS Vial : 3 Sample Multiplier: 1

Integration Parameters: events.e
Integrator: ChemStation

Method : C:\gcms\1\methods\TOX.M
Title :

Signal : EIC Ion 371.00 (370.70 to 371.70): THC-C3.D\data.ms

peak #	R.T. min	first scan	max scan	last scan	PK TY	peak height	corr. area	corr. % max.	% of total
1	4.729	42	50	60	VV	288	3382	29.91%	12.158%
2	5.378	265	276	300	VV 3	709	11306	100.00%	40.645%
3	5.987	476	487	502	VV	120	2635	23.31%	9.472%
4	6.289	568	592	606	VV	165	3779	33.43%	13.586%
5	6.355	606	615	633	VV	90	2212	19.57%	7.953%
6	6.662	690	722	758	BB	138	4503	39.82%	16.186%

Sum of corrected areas: 27817

Signal : EIC Ion 473.00 (472.70 to 473.70): THC-C3.D\data.ms

peak #	R.T. min	first scan	max scan	last scan	PK TY	peak height	corr. area	corr. % max.	% of total
1	5.379	265	276	296	BV 3	246	3630	100.00%	100.000%

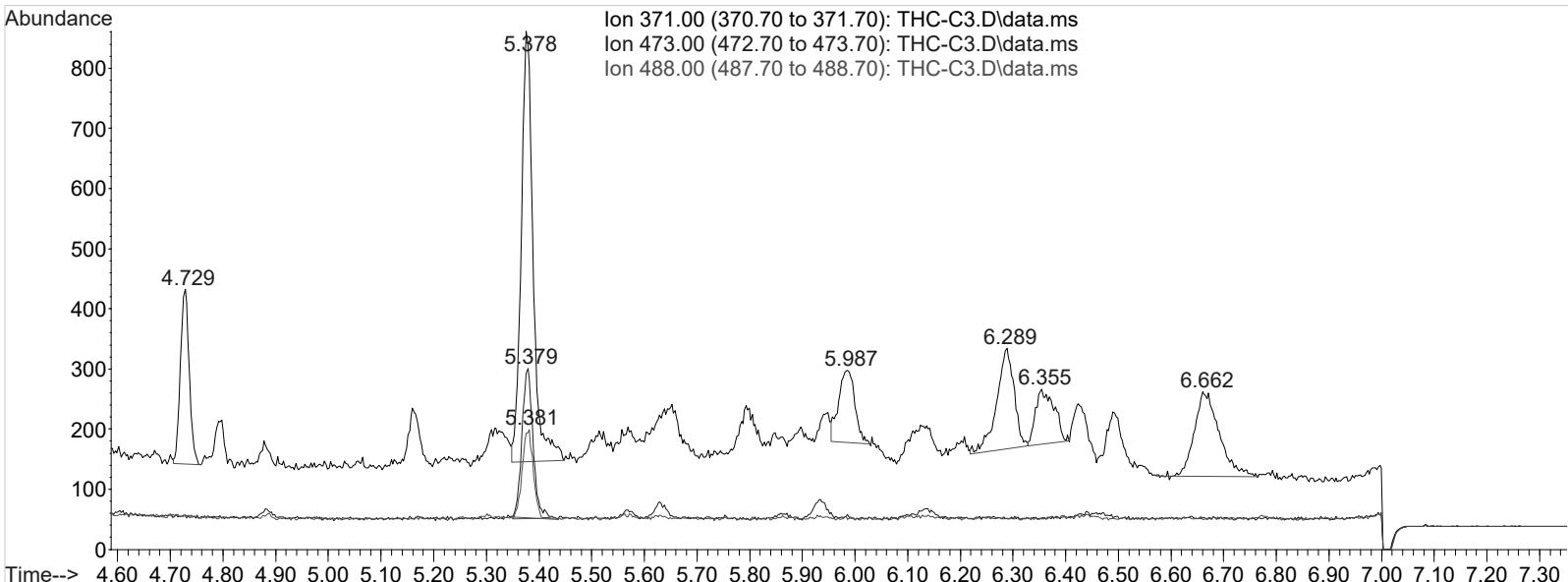
Sum of corrected areas: 3630

Signal : EIC Ion 488.00 (487.70 to 488.70): THC-C3.D\data.ms

peak #	R.T. min	first scan	max scan	last scan	PK TY	peak height	corr. area	corr. % max.	% of total
1	5.381	266	277	291	BB 3	145	2128	100.00%	100.000%

Sum of corrected areas: 2128

TOX.M Sat Feb 17 09:57:07 2018



AM #3 Urine Carboxy-THC QC Calculations

Run Date: 2/16/2018

Case Calculations:

Lab Case #: BRC3 Lot: 68440

<i>EIC Ion 371 Corr. Area:</i>	11306	
<i>EIC Ion 473 Corr. Area:</i>	3630	473:371 Ratio: 0.321
<i>EIC Ion 488 Corr. Area:</i>	2128	488:371 Ratio: 0.188

Quality Control Calculations:

Retention Time acceptable range: 5.272 to 5.466

	<i>1st ctrl</i>	<i>2nd ctrl</i>
<i>EIC Ion 371 Corr. Area:</i>	37109	36730
<i>EIC Ion 473 Corr. Area:</i>	12521	12286
<i>EIC Ion 488 Corr. Area:</i>	7670	7649

Approximate minimum corrected area of 371 ion: ~ 7422

<i>Ratio of 473:371</i>				
	<i>1st ctrl</i>		<i>2nd ctrl</i>	<i>avg.</i>
	0.337		0.334	0.336
<i>Accepted Range</i> <small>(+/- 20%)</small>	0.269 - 0.403			

<i>Ratio of 488:371</i>				
	<i>1st ctrl</i>		<i>2nd ctrl</i>	<i>avg.</i>
	0.207		0.208	0.207
<i>Accepted Range</i> <small>(+/- 20%)</small>	0.166 - 0.249			

Carboxy-calculation sheet
Revision 0 effective date 10/23/13
Issuing authority: Quality Manager